

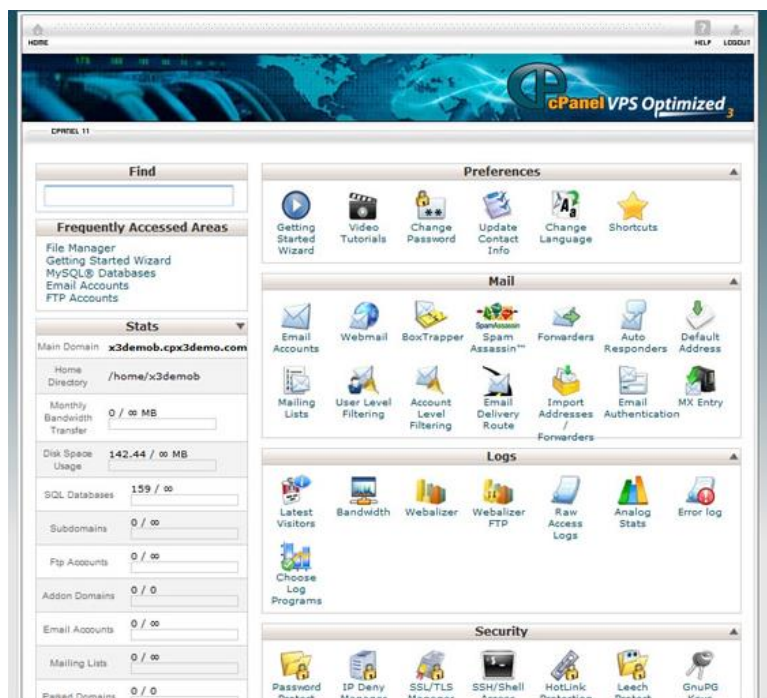


## Powerful Dedicated Servers

Dedicated servers give you total freedom to use it in any way you want, and install any software, applications or scripts you need.

Shared hosting is simply not designed for large websites or mission critical websites. Without the platform and infrastructure to cope with demanding levels of traffic and downloads, how can your business grow? Because you have sole access to the dedicated server and do not share any resources with other users, they offer hugely superior performance and flexibility.

“Advanced dedicated server technology built to the highest specification backed by Dell and Intel technology”



*cPanel screenshot*

Your server comes with a 100mb connection to the Internet; it's just like having your own leased line. You can transfer as much data as you like within your 100mb line. Don't get this confused with your broadband at home or work; you don't share your 100mb with anyone else. 100mb is a huge amount

of bandwidth which can support a very busy website. It roughly translates to 25600 GB of bandwidth a month

## Key benefits



### The latest server technology

Advanced dedicated server technology built to the highest specification backed by Dell and Intel technology. All our dedicated servers are set up with hardware level RAID mirroring. In the unlikely event of a disk failure, this means your dedicated server will continue to operate normally.



### It is your server

As long as anything you do on the server abides with UK law then you are free to use the server for any purpose you see fit. It is yours after all.



### 99.99% uptime guarantee

We know that your server is an important part of your business, so every Dedicated Server we sell comes with a comprehensive Service Level Agreement.

## Features and specifications

Our dedicated servers offer outstanding performance for even the most demanding of websites with the latest Intel & Dell technology combining unparalleled server specification, bandwidth and service with a low monthly fee.

<b>Operating system</b>	<i>Linux or Windows</i>
<b>Server memory (RAM)</b>	<i>4GB up to 32GB</i>
<b>Server hard drive</b>	<i>Storage 2x 160GB (RAID1) up to 600GB SAS (RAID10)</i>
<b>Hardware RAID</b>	✓
<b>Remote server reboot</b>	✓
<b>Unlimited bandwidth</b>	✓
<b>Root system access</b>	✓
<b>Free IP addresses</b>	2
<b>cPanel &amp; WHM</b>	Optional
<b>Server back ups</b>	Optional

# Dedicated Server FAQs

## **What type of hardware do you use?**

All our servers are genuine Dell Servers. If you are comparing us to other providers please be aware that many companies make "homemade" servers using home computer motherboards in fabricated boxes.

## **What level of access do I have to my server?**

You will have full root or administrator privileges to manage and access your server.

## **Is there any software installed on the server to help me configure it?**

Yes, if you have chosen our Linux CentOS installation then we automatically install WebMin. WebMin is a web based control panel that allows you to do system administration tasks such as configure Apache or setup users. If you want the easiest management possible then we would suggest you add cPanel to your server.

## **Can I use my server to host videos, stream audio or store large backups?**

Yes, you can use your server for any purpose you need.

## **Where will my server be located?**

Your server will be based in our UK Data Centres.

## **Does the server run RAID disk mirroring?**

Yes, all our servers are setup with hardware level RAID mirroring. In the unlikely event of a disk failure this means your server will continue to operate normally. We will be notified of the disk failure and will replace the broken disk for you with no cost or impact to your data or service.